

SYM	TOTAL	TYPE	TEMP	K	NPT	#SIN	MFG.	ESCU
●	292	QR PENDENT SPRINKLER	155	5.6	1/2	VK302	VIKING	Chrome Rec.
○	73	QR BRASS UPRIGHT	200	5.6	1/2	VK200	VIKING	-
⊗	465	QREC PENDENT SPRINKLER	155	11.2	3/4	VK302	VIKING	Chrome Rec.
●	12	QR PENDENT SPRINKLER	200	5.6	1/2	VK200	VIKING	Chrome Rec.
△	5	DRY SIDEWALL SPRINKLER	155	5.6	1/2	VK302	VIKING	Chrome Rec.
●	3	DRY PENDENT SPRINKLER	155	5.6	1/2	VK200	VIKING	Chrome Rec.
	850	Total Sprinklers						

Note: Underground Piping Shown for Reference only. Installed, Permitted and Tested By others.

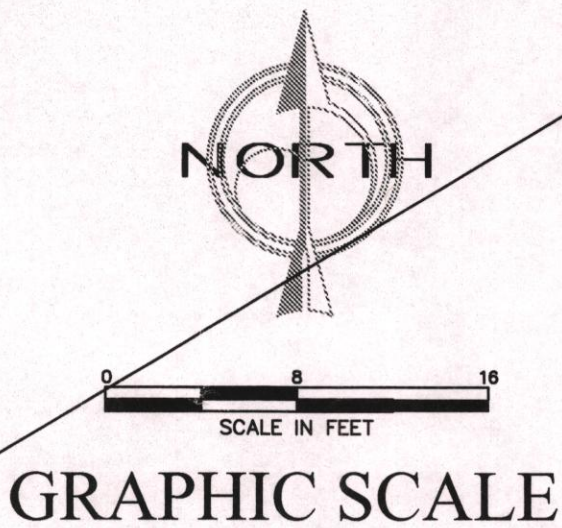
SAW, CUT, AND REMOVE AND REPLACE SIDEWALK AFTER FIRE LINE AND OTHER LINES ARE INSTALLED.

Flow Test Information  
Static = 52 PSI  
Residual = 38 PSI  
Flow = 980 GPM  
Conducted by BaySide Fire Protection, LLC  
1-14-10 at 10:30 AM

LOCATE FIRE SPRINKLER SYSTEM RISER HERE, SEE ENLARGED PLAN THIS SHEET.

6" Double Check Backflow Preventer w/ FDC

APPROXIMATE LOCATION OF HYDRANT 'B'



Overall Site Plan  
Scale: 1"=80'

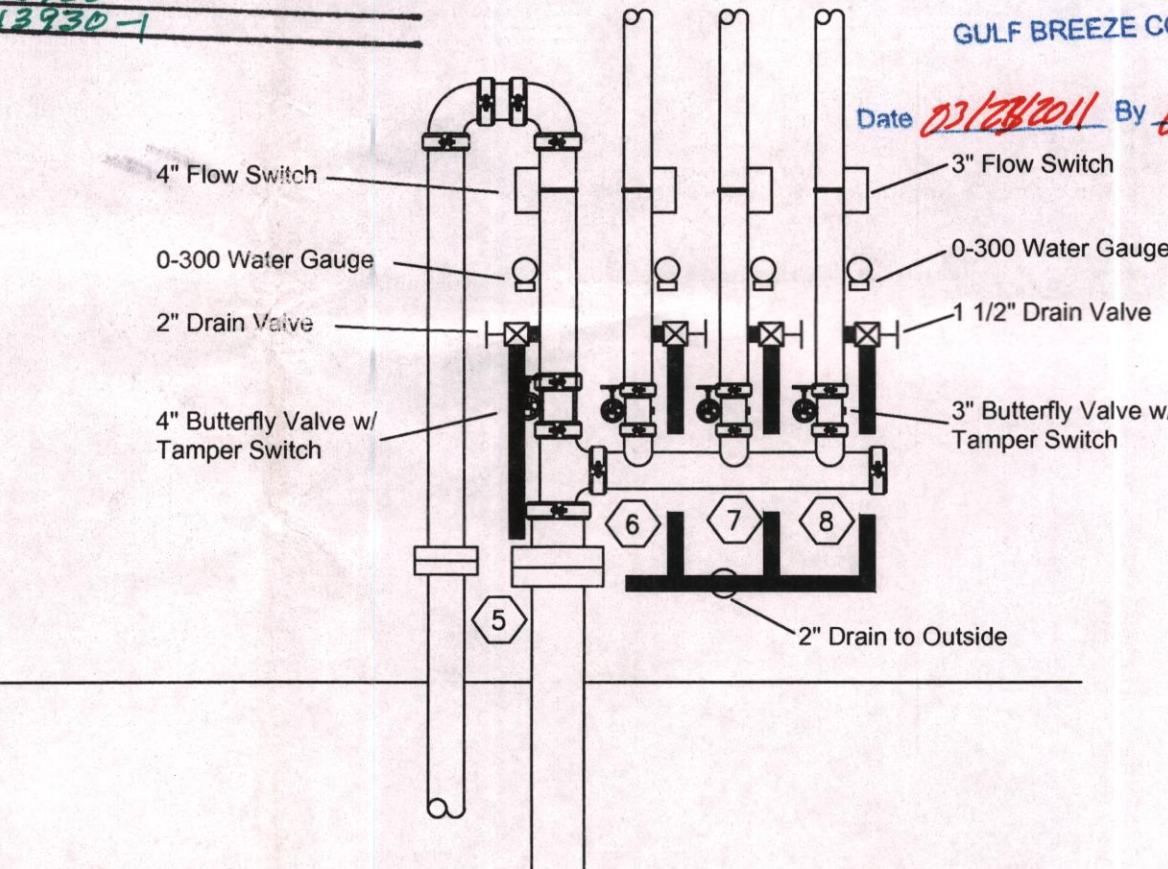
1	ATR	1
2	SWIVEL RING	1
3	J.TOP BEAM CLAMP	1
4	NIL	0
5	NIL	0

## SPECIFICATIONS & NOTES

BUILDING: ONE STORY - STEEL CONSTRUCTION  
OCCUPANCY: EDUCATIONAL FACILITY  
HAZARD: LIGHT HAZARD / Ordinary Group I  
STANDARD: N.F.P.A. 13  
DESIGN: ALL AREAS LIGHT HAZARD EXCEPT MECHANICAL, KITCHEN, AND STORAGE AREAS AND TRUCK BAY WHICH SHALL BE ORDINARY GROUP I.  
"K" FACTOR SPRINKLERS: 5.6 & 11.2 UNLESS OTHERWISE NOTED (SEE HYDRAULIC CALCULATIONS)  
SPRINKLERS TO BE 155 AND 200 DEGREE TEMPERATURE. (SEE DRAWING FOR LOCATION)  
ALL WORK TO BE DONE IN ACCORDANCE WITH N.F.P.A. 13  
ALL MATERIAL TO BE U.L. LISTED  
ALL MATERIAL TO BE INSTALLED IN ACCORDANCE WITH MANUFACTURES SPECS.  
ALL PIPING TO BE HYDROSTATICALLY TESTED AT 200 P.S.I. FOR 2 HRS.  
PIPING : ABOVE GROUND PIPING SHALL BE CPVC PLASTIC PIPING WITH SLIP TYPE FITTINGS FOR 2" & SMALLER. 2 1/2" & LARGER SHALL BE BLACK SCH 110 & SCH40G w/ GROOVED OR WELD FITTINGS.  
HANGERS: LOCATION & TYPE PER N.F.P.A. 13. SEE DETAILS FOR VIEW.  
ALL WORK TO BE PERFORMED BY TRAINED PERSONS IN A WORKMANSHIP LIKE MANNER  
WORK TO START AT FLANGE 1'-0" ABOVE FINISHED FLOOR. UNDERGROUND FIRE MAINS AND RISER STUB IN TO 1'-0" ABOVE FINISHED FLOOR TO BE INSTALLED, FLUSHED AND TESTED "BY OTHERS"  
WORK BY OTHERS: WATER SERVICE, EXCAVATION, BACKFILL, THRUST BLOCKS, CUTTING, PATCHING,ELECTRICAL, & GENERAL CONSTRUCTION.  
ALL WORK BY OTHERS TO BE DONE IN ACCORD. WITH APPLICABLE CODE STANDARDS.

HEWES & COMPANY  
REVIEWED AND NOTED FOR THE GENERAL INTENT OF THE PLANS AND SPECIFICATIONS  
This review does not relieve the subcontractor / supplier of any responsibility for dimensions, materials, quantities, coordination with other trades, errors and omissions in these drawings and full compliance with contract documents.  
NO EXCEPTIONS TAKEN  
REJECTED  
By: NLS  
Sub/Supplier: BAYSIDE FIRE PROTECTION  
Spec. Section: 13430  
Submittal No.: 13430-1

REVIEWED  
REJECTED  
REVISE AND RESUBMIT  
FURNISH AS CORRECTED  
Corrections or comments made on the shop drawing during this review do not relieve contractor from compliance with requirements of the drawings and specifications. This check is only for the review of general conformance with the design concept of the project and general compliance with the information given in the contract documents. The contractor is responsible for confirming and correlating all questions and dimensions, selecting fabrication processes and techniques of construction, coordinating his work with that of all other trades, and performing his work in a safe and satisfactory manner



Enlarged Riser Detail  
Scale: 1/2"=1'-0"

## Drawing Legend

- FP1 - Site Plan & Notes
- FP2 - Kitchen/Cafeteria Piping Plan
- FP2A - Kitchen/Cafeteria Ceiling Plan
- FP3 - Office/Media Piping Plan
- FP3A- Office/Media Ceiling Plan
- FP4 - Classroom Wing #300 Piping Plan
- FP5 - Classroom Wing #400 Piping Plan
- FP6 - Classroom Wing #500 Piping Plan
- FP7 - Classroom Wing #600 Piping Plan
- FP8 - Classroomwing #700 Piping Plan
- FP9 - Classroom Addition Piping Plan

## REVISIONS

P.O. Box 7648  
Pensacola, FL 32534  
(850)-206-3269  
Fax (850)958-0206



SEAL:

West Navarre  
Intermediate  
School

1970 Cotton Bay Lane  
Navarre, Florida 32566

SHEET TITLE:

Site Plan, Notes  
Details

DRAWN BY: MAT  
CHECKED BY: SUN  
APPROVED BY:  
PROJECT NO: 11-018  
DATE: 2-24-11

SHEET

FP1